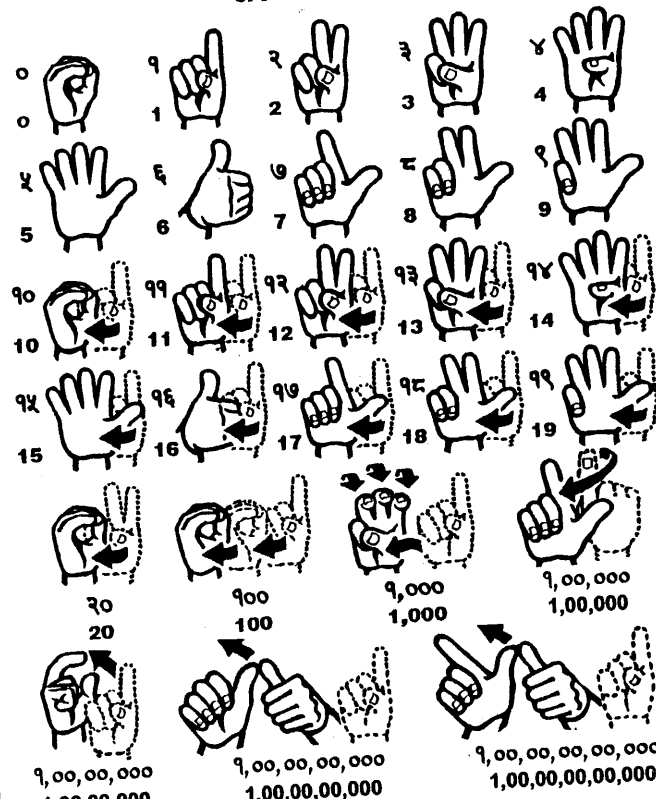


व्यंजन-वर्ण NEPALI-CONSONANTS



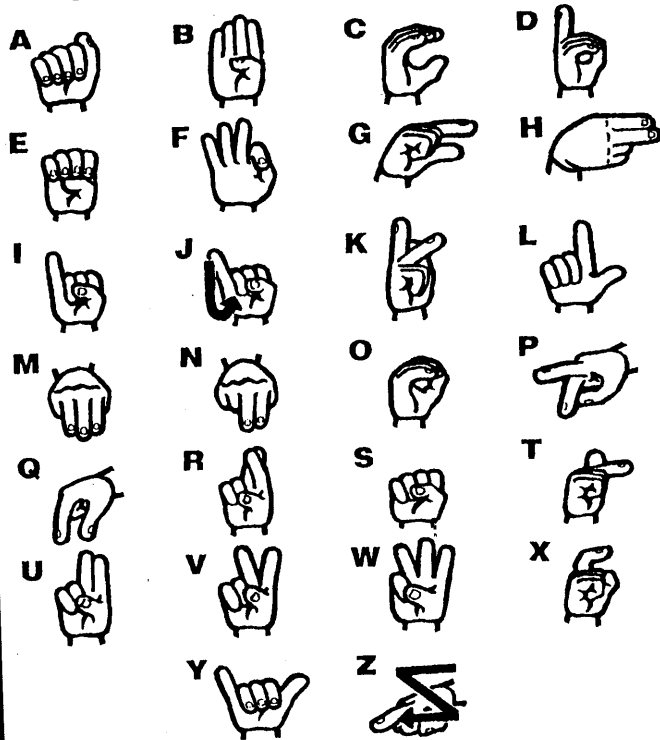
नेपाली हस्तवर्णमाला Nepali Finger Spelling


अंक NUMBER



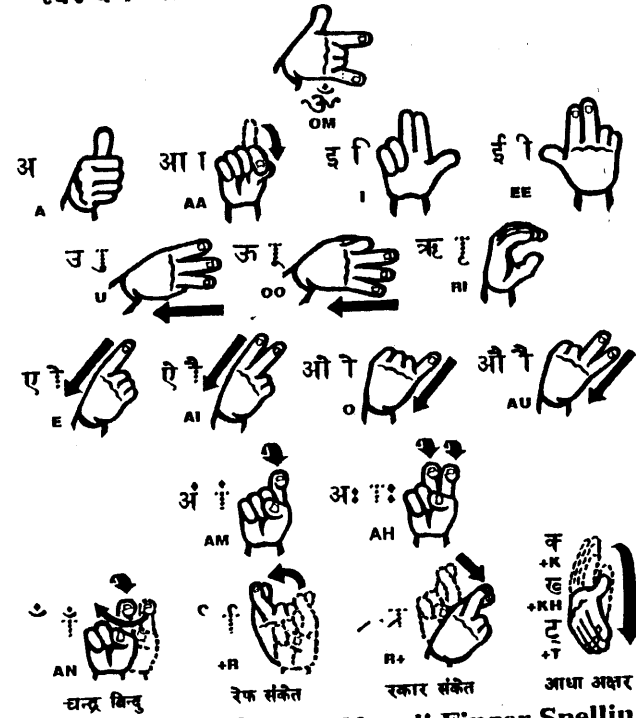
नेपाली हस्तवर्णमाला Nepali Finger Spelling

**INTERNATIONAL MANUAL ALPHABET**




 **NEPAL NATIONAL FEDERATION OF THE DEAF & HARD OF HEARING (NFDH)**  
Nepali Sign Language National Development Committee  
P.O.Box: 11338, Kathmandu, Nepal

**स्वर-वर्ण NEPALI-VOWELS & CONJUNCT LETTERS**



**नेपाली हस्तवर्णमाला Nepali Finger Spelling**

 **नेपाल राष्ट्रिय बहिरा तथा सुस्त श्रवण महासंघ (NFDH)**  
नेपाली सांकेतिक भाषा राष्ट्रिय विकास समिति  
पो.ब.नं. ११३३८, काठमाडौं, नेपाल