

DISABILITY GRADING FOR THE EYES IN LEPROSY.

Dr Hemed Kilima

KCMC Eye Department
Kilimanjaro Centre for Community Ophthalmology
Ministry of Health, Tanzania

COMPONENTS OF W.H.O. GRADING

- Low vision (<6/60)

- Leprosy related pathology.
 - Lagophthalmos.
 - Iridocyclitis.
 - Corneal opacity/ disease.

Agreement between grading carried out by integrated health worker & eye care worker

W.H.O. Grade	IHW	Eye care worker
0	306	244
1	8	60
2	3	13

VISUAL ACUITY

Visual acuity	IHW grading of eye disability		
	0	1	2
6/18+	269	4	2
6/18-6/60	26	2	0
<6/60	11	2	1

LEPROSY RELATED PATHOLOGY

Leprosy related pathology	IHW grading of eye disability		
	0	1	2
Present	40	7	3
Absent	266	1	0

Leprosy related pathology

Lagophthalmos (n=9)

- 5 patients with lagophthalmos were graded as 0.
- Improved training could correct

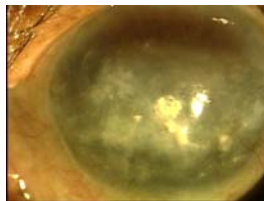
"Iridocyclitis" (n= 9)

- 7 patients with "red eye" (and uveitis) graded as 0.
- Improved training on "facial patch" and "persistent red eye" could correct somewhat; impractical for IHW to recognize iridocyclitis

Leprosy related pathology

Corneal opacities (n=20)

- 16 patients with corneal opacity graded as having 0 disability.
- Corneal opacity cannot be recognized properly without magnifying loupe



CONCLUSION

- Current WHO eye disability grading scheme under-estimates eye disabilities when done by non eye care personnel.
- Some components of grading need special training and instruments
- Some components of grading are either impractical and/or unnecessary for assessing disability.



RECOMMENDATIONS

- Revise the W.H.O. disability grading scheme to only include (as grade 2):
 - Visual acuity (<6/60)
 - Lagophthalmos
- Upgrade training for IHW
- Appropriate teaching through medical, nursing and paramedical curricula.
- Provision of appropriate instrument (VA chart).