



Secretaria de Vigilância em Saúde

Achievement in elimination and future Hansen's Disease Program - Brazil's perspective



Maria Leide W. Oliveira
National Coordinator

MINISTRY OF HEALTH
SECRETARIAT OF HEALTH SURVEILLANCE
DEPARTMENT OF EPIDEMIOLOGICAL SURVEILLANCE
NATIONAL HANSEN'S DISEASE CONTROL PROGRAM

Ministério da Saúde 



Secretaria de Vigilância em Saúde

Current HD Situation in Brazil

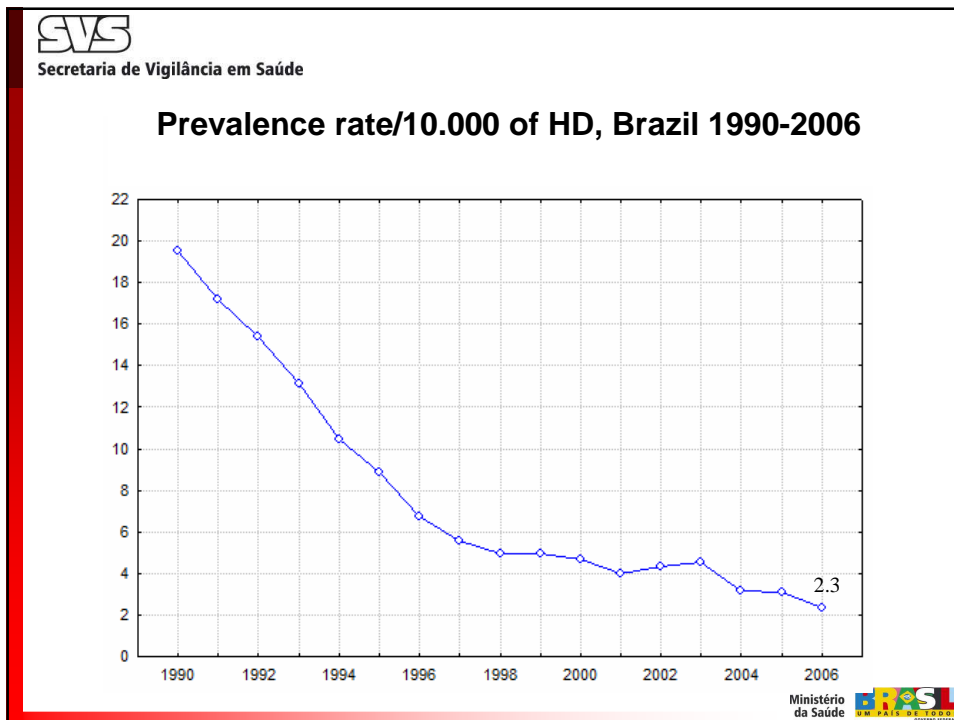
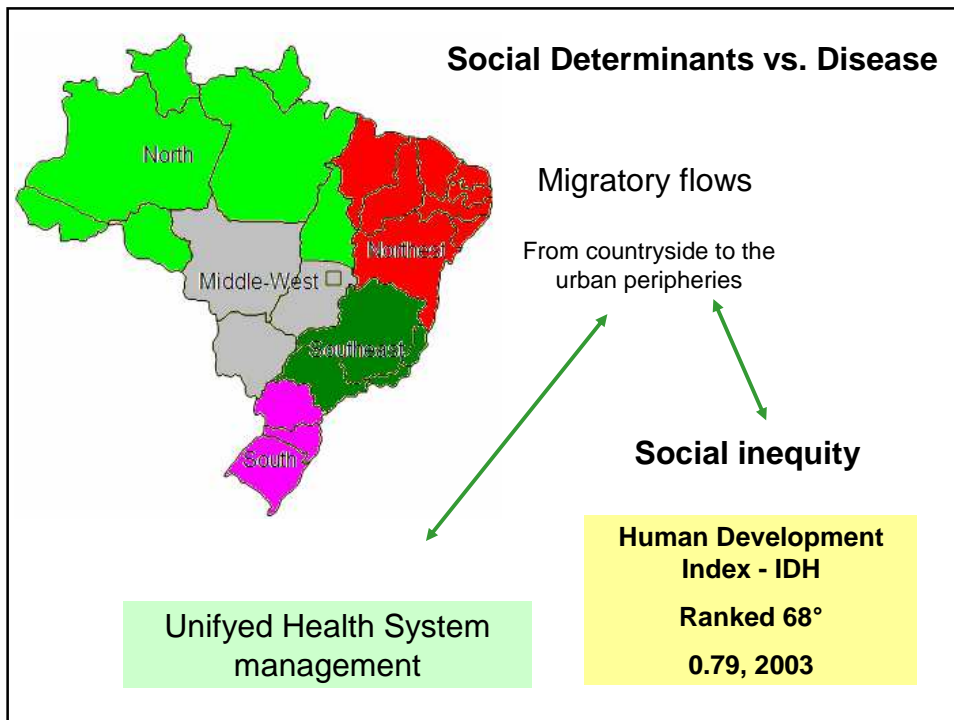
2006 Highlights

- An average of 47,612 new cases have been detected yearly, in the last 5 years (2.5/10.000; 55% - Age:39 (20-29); 18% illiterates)
- 8% of the new cases were children (0.6 per 10.000 pop under 15 years)
- 6% of the new cases presented grade 2 disability
- 53% of new cases detected were MB

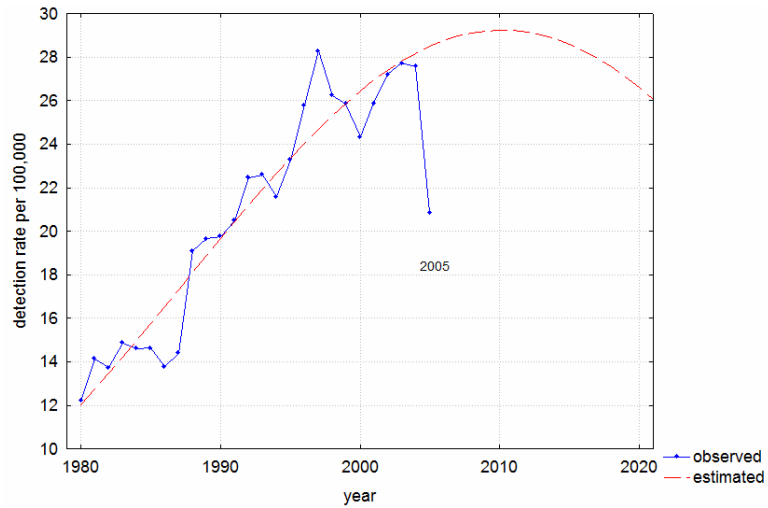
- 44,176 cases were under MDT treatment - 2.3/10,000 inh (2006)
- 85% of diagnosed MB/PB patients in 2005-2006 were released by cure (2006)
- 47% of household contacts examined

- 15,000 health centers were diagnosing and treating HD cases (34% of all health facilities existing, 2007)

Ministério da Saúde 

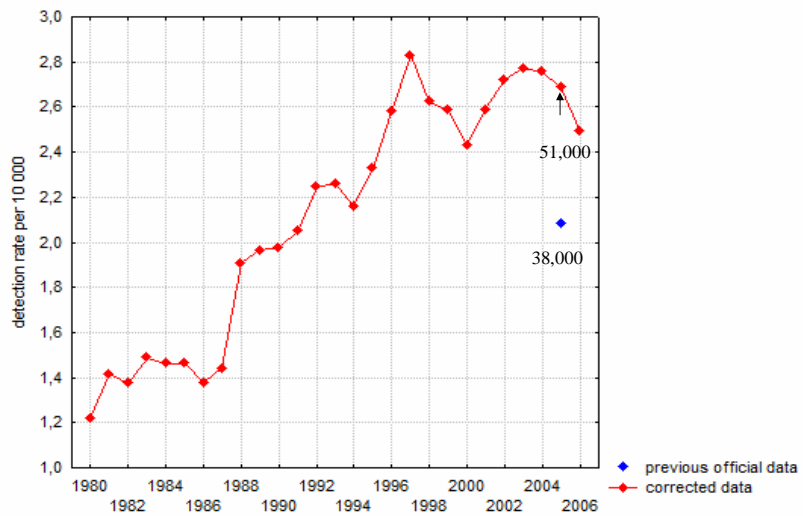


Observed and predicted yearly detection rate of HD cases, Brazil, 1980 - 2020

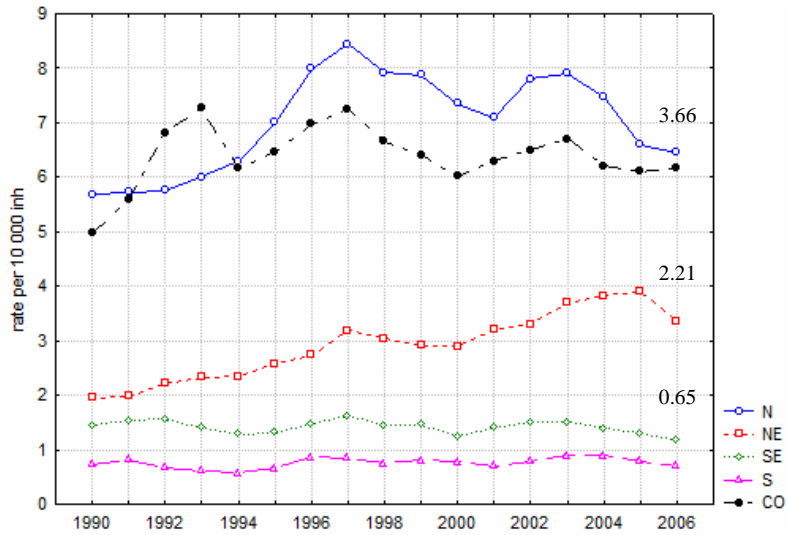


M. L. F. Penna & G. O. Penna Case detection and leprosy elimination in Brazil Tropical Medicine and International Health volume 12 no 3 pp 647-650 may 2007

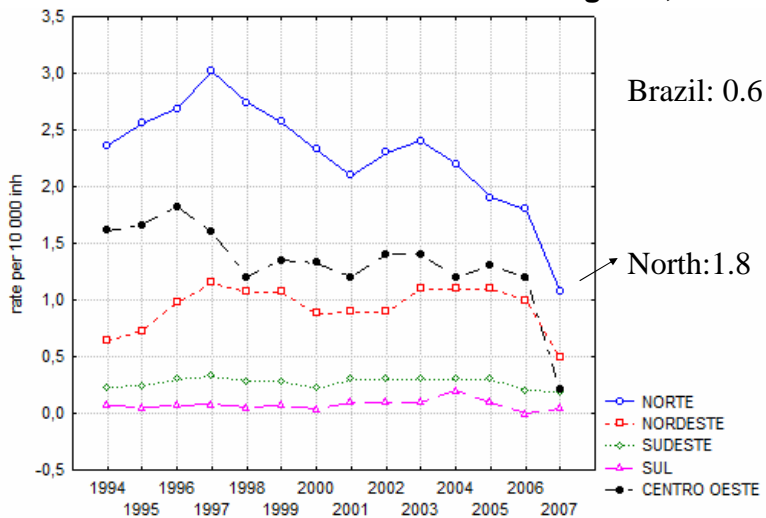
Observed yearly detection HD cases in Brazil, 1980-2006

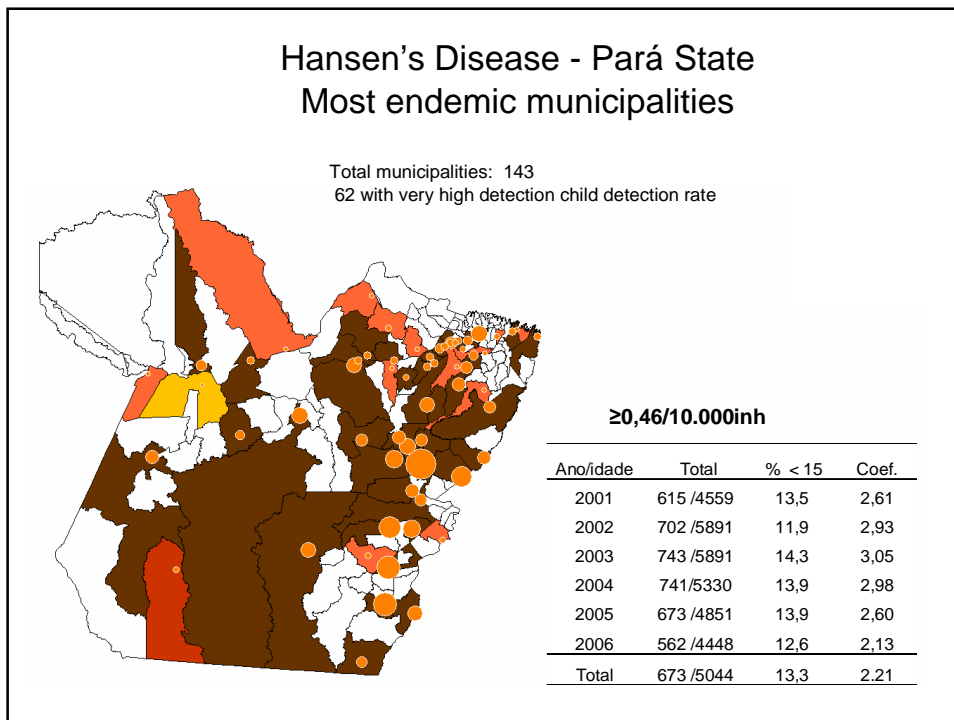
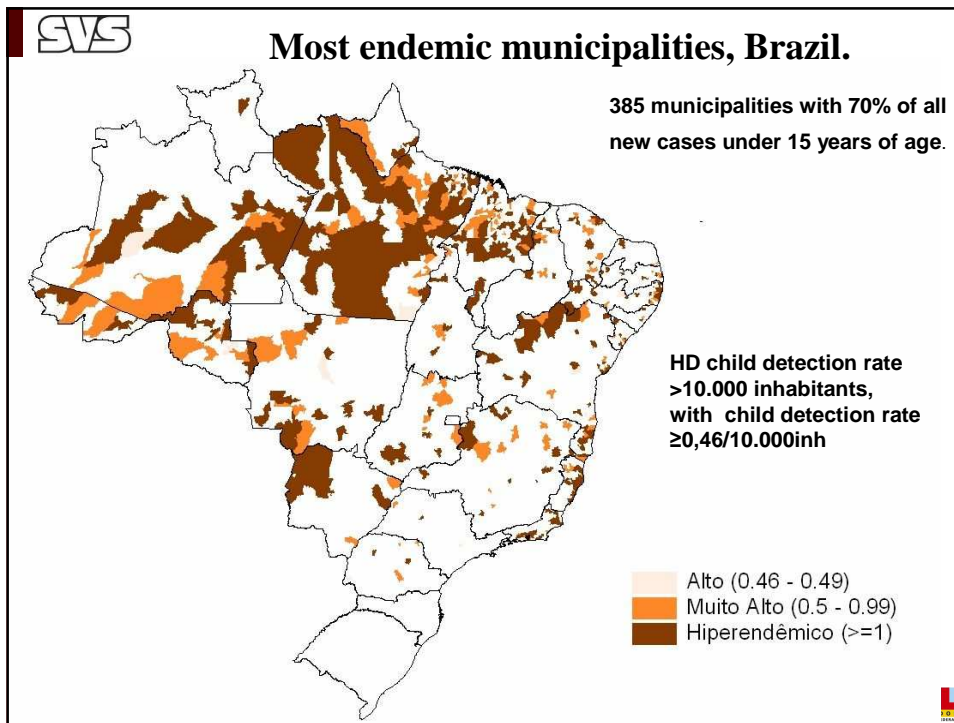


HD Detection rate/10000, Brazilian regions. 1994-2006



HD child detection rate/10.000. Brazilian regions, 1994-2006

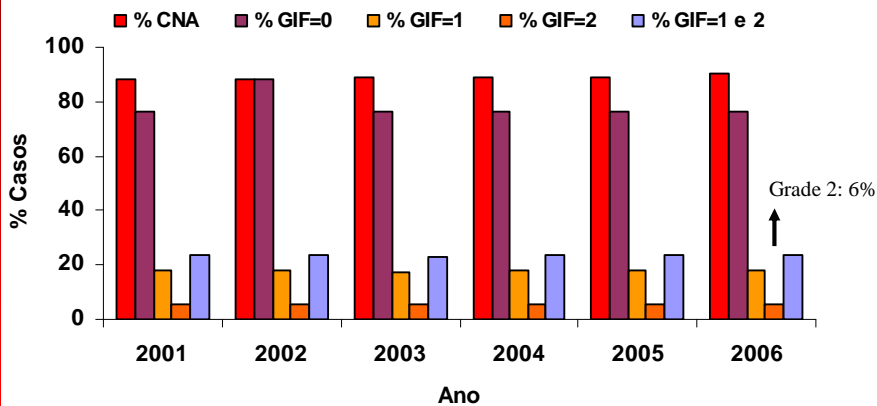




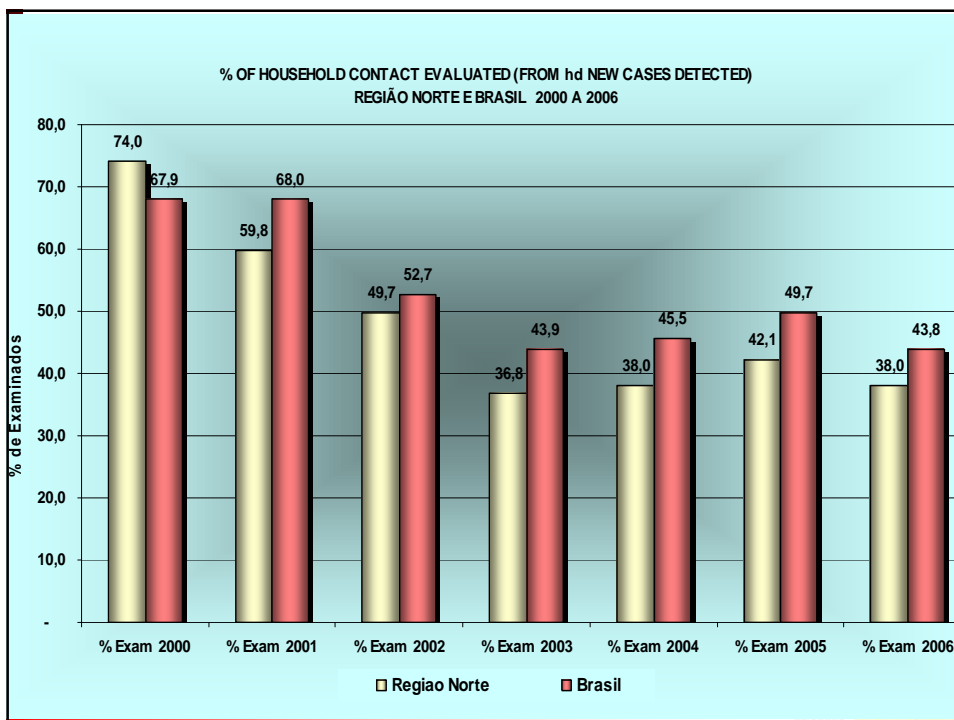
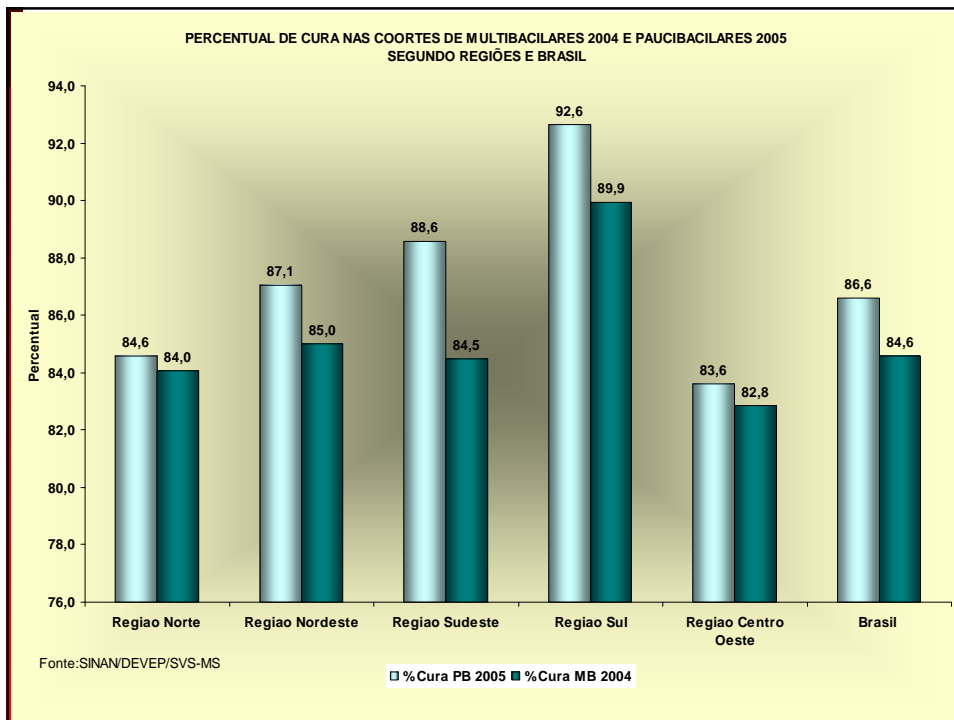
Discussion

- ✓ THE MAINTENANCE OF ACTIVE CASE FINDING STRATEGIES
- ✓ ACTIVE TRANSMISSION IN SOME REGIONS
- ✓ OVERDIAGNOSIS – DECENTRALIZATION CONSEQUENCE?
- ✓ HIGH SECOND DOSIS OF BCG COVERAGE (67% PB)
- ✓ DATA ENTRANCE INTO SINAN (Typing mistakes)

Percentage of Cases Assessed upon Diagnosis with Degree of Physical disability = 0, 1, 2 and 1+2 - Brazil, 2001 to 2006.



Source: SINAN assessed in 29/05/07



Ongoing Activities/Main Strategies

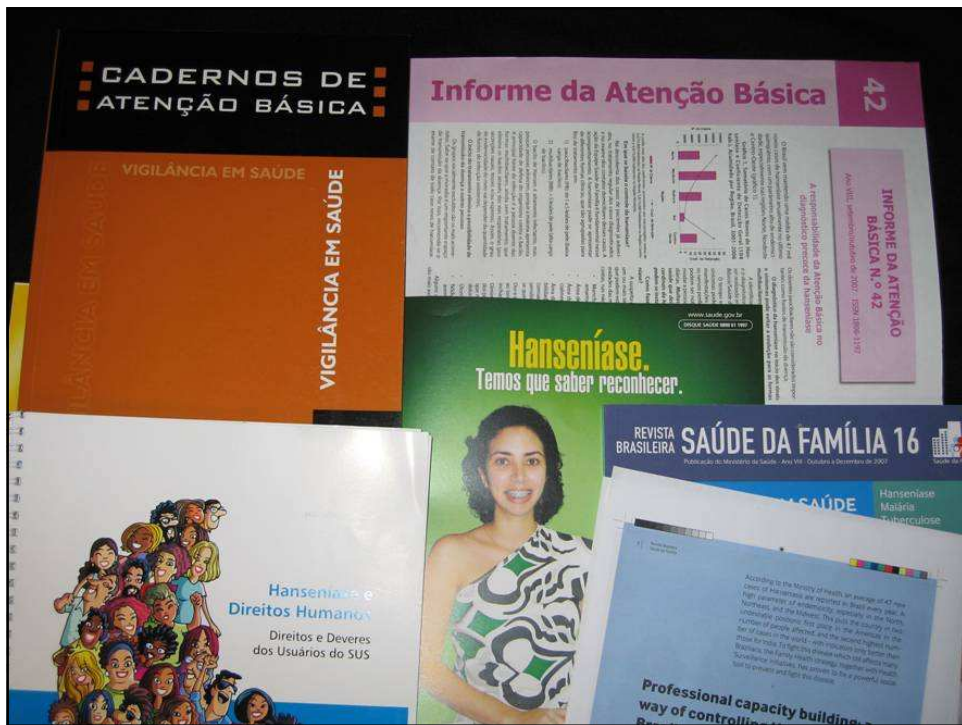
- Increased data reliability: close work with SINAN coordination/ Update HD trend with foccus especially on priority areas
- PNCH Integration into Basic Health Care: close work with Basic Health Care Department
- Capacity Building Workshops to improve M & A
- To improve POD and Rehabilitation (medium -high complexity rehab procedures-ILep Project)
- To implement Educational Communication (Leprosy X Hansen´s Disease)

Ongoing Activities/Main Strategies


- Re-structuring ex-Colony Hospitals (Social Dimension - since MDT implementation)
- To improve Operational Research and reinforce interchange between existing Research Reference Centers
- To ensure the technical –political and social sustainability of the program: stake holders, NGO's - ILEP members and Patients Organization-MORHAN (harmoniously)

Main constraints:

- Regional and local management of SUS
- National Information System-SINAN
- Technical guidelines adherence
- Drugs shortage (received 68% of the total requested; 2007)



SVS
Secretaria de Vigilância em Saúde



Thank You!

maria.leide@saude.gov.br
www.saude.gov.br/svs

Ministério da Saúde 